

Aquaplus

ESI Series
End Suction ISO
ISO Bare Shaft Pumps



ISO Bare Shaft Pumps

*Extensive stock holdings
Australia-wide*

**2 Year
Warranty!**

Manufactured to the ISO2858
(5199) standard

www.aquapluspumps.com.au

The ESI Series of ISO Bare Shaft Pumps comply fully to the international standards of ISO 2858 and ISO 5199.

Features

- Extensive stock holdings Australia wide
- Dynamically balanced non-clog impeller
- Back pull-out design
- Maximum operating pressure 1600kPa
- Maximum speed between 1800 RPM and 3600 RPM
- Maximum temperature 140°C
- Standard shaft sealing is mechanical seal (packed gland on request)
- Shaft carried in oil lubricated bearings (oil lubrication on request)

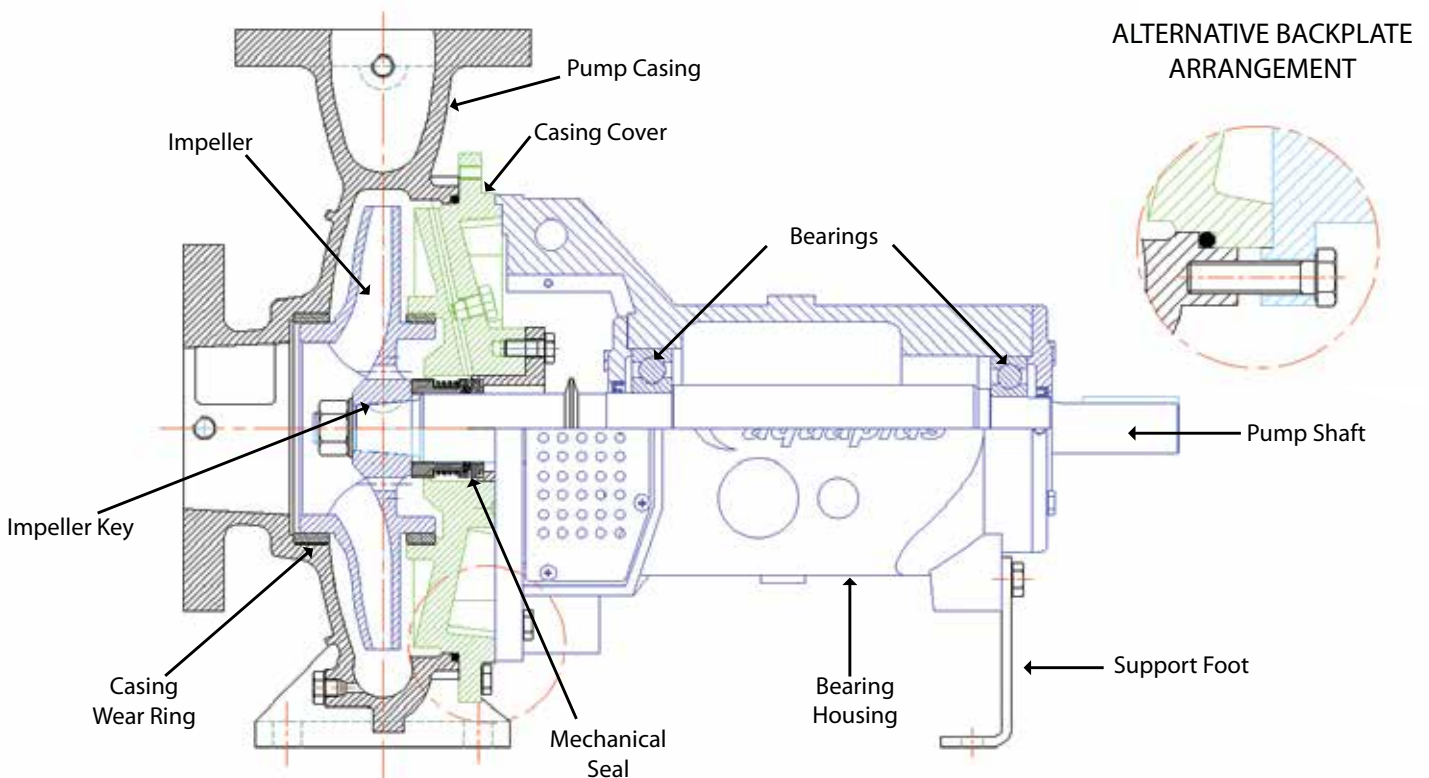
Applications

- Circulation of liquids
- Condenser water
- Heating water
- Irrigation
- HVAC
- Dewatering



The Aquaplus ISO range is also available in Motor Pumps and Long Coupled configurations

Cutaway



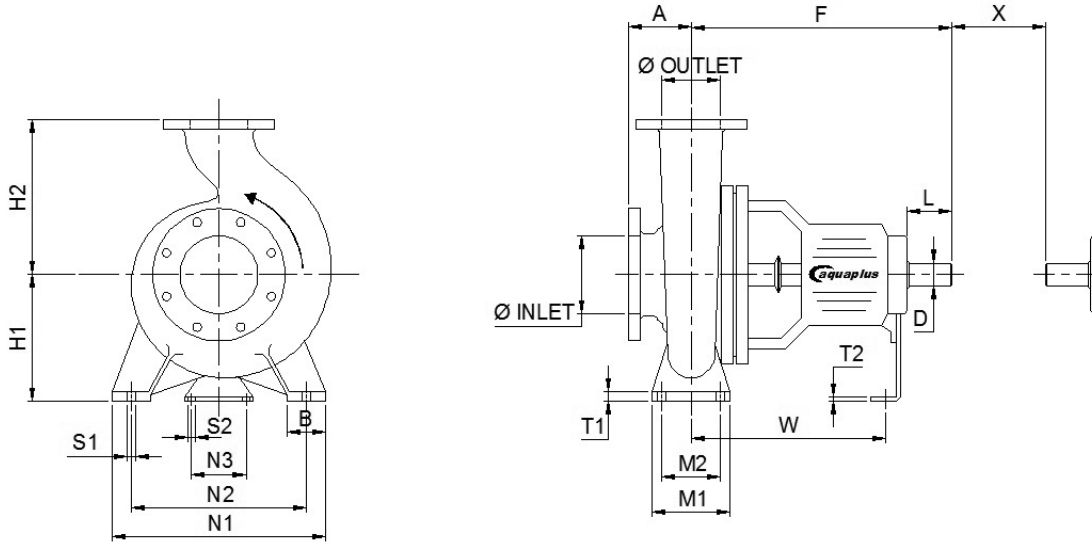
Pump Material Options *

Code	Casing	Impeller	Shaft	Wear Ring
10	Cast iron AS1830 T220	Bronze (Zinc free) AS1565 C95210	Stainless steel AS1449 GR431	Bronze (Zinc free) AS1830 T220
50	Cast iron AS1830 T220	Stainless steel AS1449 316Ti	Stainless steel AS1449 GR431	Cast iron AS1830 T220
52	Cast iron AS1830 T220	Cast iron AS1830 T220	Stainless steel AS1449 GR431	Cast iron AS1830 T220

*All materials are solid cast, with no body filler, ensuring lasting performance quality.

All content is subject to change without notice.

Pump Dimensions



Pump Size			Shaft No	Pump Dimensions				Mounting Dimensions									Bolt Holes		Shaft End		Gap	Pump Mass
Inlet	Outlet	Imp Dia		A	F	H1	H2	B	M1	M2	N1	N2	N3	T1	T2	W	S1	S2	D	L	X	kg
50	32	160	1	80	385	132	160	50	100	70	240	190	110	12	6	285	M12	M12	24	50	100	38
50	32	200	1	80	385	160	180	50	100	70	240	190	110	13	6	285	M12	M12	24	50	100	46
65	50	160	1	80	385	132	160	50	100	70	240	190	110	12	6	285	M12	M12	24	50	100	40
65	40	200	1	100	385	160	180	50	100	70	265	212	110	13	6	285	M12	M12	24	50	100	48
65	40	250	2	100	500	180	225	65	125	95	320	250	110	14	6	370	M12	M12	32	80	100	70
65	40	315	2	125	500	200	250	65	125	95	345	280	110	16	6	370	M12	M12	32	80	100	80
80	65	160	1	100	385	160	180	50	100	70	265	212	110	13	6	285	M12	M12	24	50	100	49
80	50	200	1	100	385	160	200	50	100	70	265	212	110	13	6	285	M12	M12	24	50	100	53
80	50	250	2	125	500	180	225	65	125	95	320	250	110	15	6	370	M12	M12	32	80	100	76
80	50	315	2	125	500	225	280	65	125	95	345	280	110	18	6	370	M12	M12	32	80	100	87
100	80	160	2	100	500	160	200	65	125	95	280	212	110	14	6	370	M12	M12	32	80	100	68
100	65	200	2	100	500	180	225	65	125	95	320	250	110	15	6	370	M12	M12	32	80	140	72
100	65	250	2	125	500	200	250	80	160	120	360	280	110	16	6	370	M16	M12	32	80	140	84
100	65	315	3	125	530	225	280	80	160	120	400	315	110	18	8	370	M16	M12	42	110	140	118
125	80	200	2	125	500	180	250	65	125	95	345	280	110	16	6	320	M12	M12	32	80	140	81
125	80	250	2	125	500	225	280	80	160	120	400	315	110	18	6	320	M16	M12	32	80	140	88
125	80	315	3	125	530	250	315	80	160	120	400	315	110	20	8	370	M16	M12	42	110	140	130
125	80	400	3	125	530	280	355	80	160	120	435	355	110	20	8	370	M16	M12	42	110	140	163
125	100	200	2	125	500	200	280	80	160	120	360	280	110	17	6	370	M16	M12	32	80	140	85
125	100	250	3	140	530	225	280	80	160	120	400	315	110	18	8	370	M16	M12	42	110	140	126
125	100	315	3	140	530	250	315	80	160	120	400	315	110	19	8	370	M16	M12	42	110	140	135
125	100	400	3	140	530	280	355	100	200	150	500	400	110	20	8	370	M20	M12	42	110	140	175
125	100	500	4	160	670	355	450	100	200	150	550	450	140	25	10	500	M20	M16	48	110	180	313
150	125	250	3	140	530	250	355	80	160	120	400	315	110	19	8	370	M16	M12	42	110	140	140
150	125	315	3	140	530	280	355	100	200	150	500	400	110	20	8	370	M20	M12	42	110	140	150
150	125	400	3	140	530	315	400	100	200	150	500	400	110	21	8	370	M20	M12	42	110	140	186
150	125	500	4	160	670	355	450	100	200	150	550	450	140	25	10	500	M20	M20	48	110	180	336
200	150	315	4	160	670	315	400	100	200	150	550	450	140	20	10	500	M20	M20	48	110	180	222
200	150	400	4	160	670	315	450	100	200	150	550	450	140	25	10	500	M20	M20	48	110	180	300
200	150	500	4	160	670	400	500	100	200	150	550	450	140	25	10	500	M20	M20	48	110	180	382
250	200	315	4	180	670	315	450	100	200	150	550	450	140	25	10	500	M20	M20	48	110	180	277
250	200	400	4	180	670	355	500	100	200	150	550	450	140	25	10	500	M20	M20	48	110	180	340

Standard Flange Drilling to AS2129-1982 Table 'E'

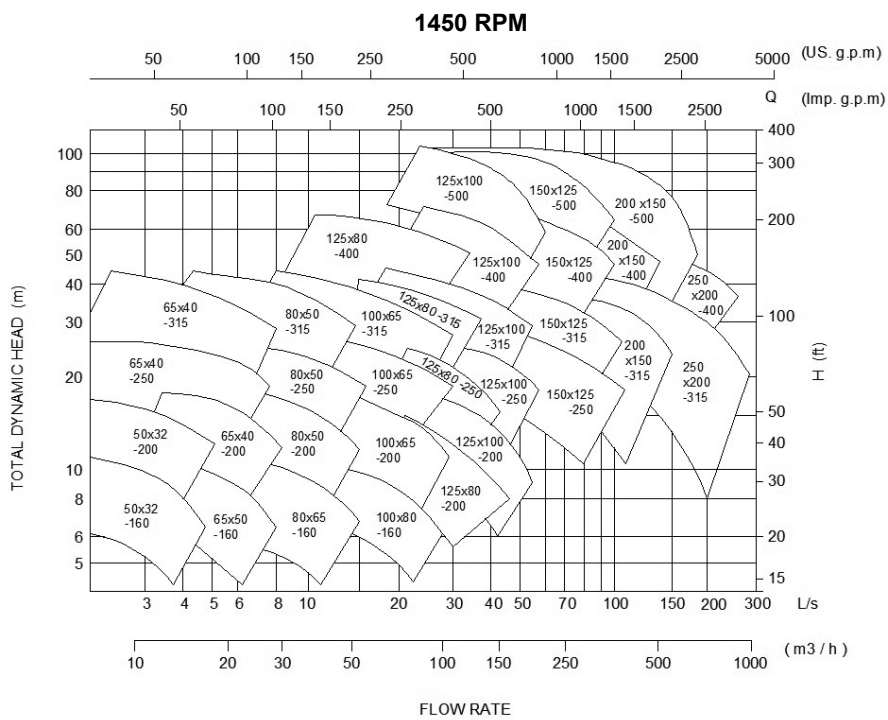
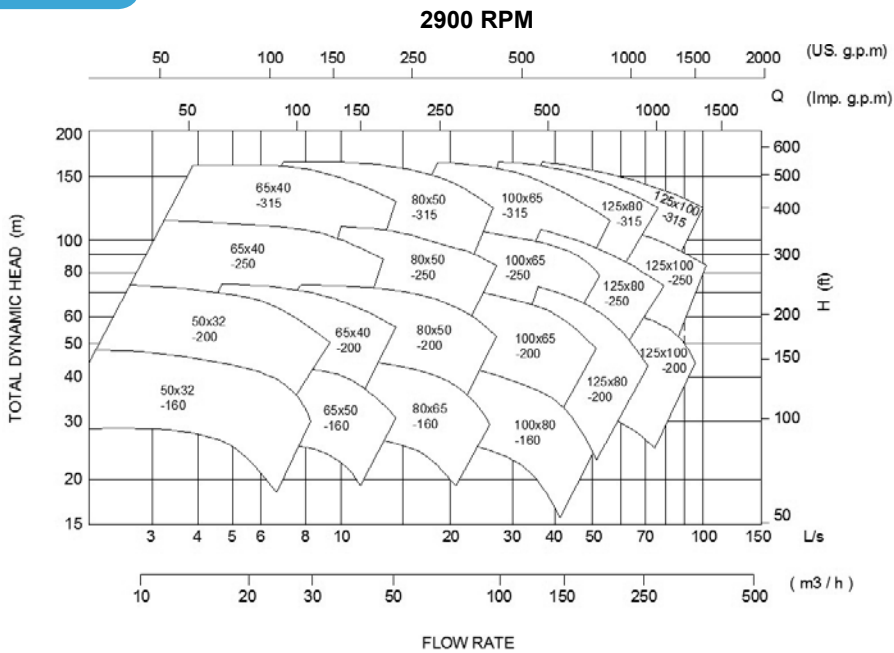
Other drilling options are available on request.

All dimensions are in millimeters

X Gap is necessary for the withdrawal of the bearing housing, backplate and impeller assembly towards the drive end.

All content is subject to change without notice.

Performance Curves



DISTRIBUTED BY



1800 733 687

www.mtp.com.au | mtp@mtp.com.au

For information on these products or for any specialised requirements please contact your local Aquaplus distributor or visit our website at www.aquapluspumps.com.au